

Corporate Presentation



CIMtech Green Energy Mfg Inc.
5-17942, 55 Ave, Surrey, BC, Canada V3S 6C8

E-mail: info@cimtech.green

www.CimtechGreenEnergy.com

Powered By
PROSHOP
Digital Manufacturing Ecosystem

Company's Overview

- ▶ CIMtech is a fast-growing company, providing services for hydrogen fuel cell & electrolyzers.
- ▶ Our turnkey solutions include proof-of-concept prototypes, NPI & global scale manufacturing of Hydrogen fuel cells & electric vehicle assemblies.
- ▶ Nominated as a top 10 manufacturing company in Canada.
- ▶ CIMtech is playing a vital role in creating a greener planet with carbon-neutral initiatives.



Our Vision



VISION

CIMtech will be as industry leader in product development from concept to manufacturing for high-tech companies in North America.

CIMtech will develop products which enhance people's lifestyle with commitment to quality, constant innovation and respect for the planet.

MISSION

CIMtech strives to be a leader in providing cost-effective prototyping and production that creates an extraordinary customer experience.

OUR VALUES

INTEGRITY <--> EXCELLENCE <--> INNOVATION <--> RESPECT <--> TEAMWORK

STRATEGIES

PRODUCT DEVELOPMENT

CIMtech will create an extraordinary customer experience with competitive lead times and provide constant feedback to improve manufacturing design for cost reduction.

MANUFACTURING

CIMtech will offer high-quality competitive manufacturing to our customers using our worldwide resources.

CIMTECH PRODUCTS

CIMtech will develop environmentally friendly products for ongoing revenue growth.

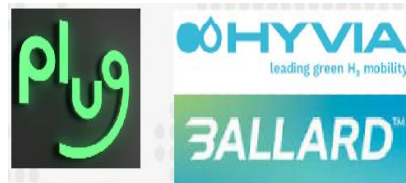
CIMtech Facility

- ▶ Modern Facility based on Industry 4.0 Digital Manufacturing Systems.



CIMtech Capabilities

- ▶ Modern Facility based on Industry 4.0 Digital Manufacturing Systems.
- ▶ 15+ years of experience with Global Manufacturing Resources.
- ▶ CIMtech customers saved \$5 million using our DFM program.
- ▶ CIMtech offers Zero Inventory Program for contract manufacturing.
- ▶ Capabilities to transition projects from proof-of-concept to large-scale production.
- ▶ Long-term production partnerships with the biggest names in the fuel cell industry.



\$MART

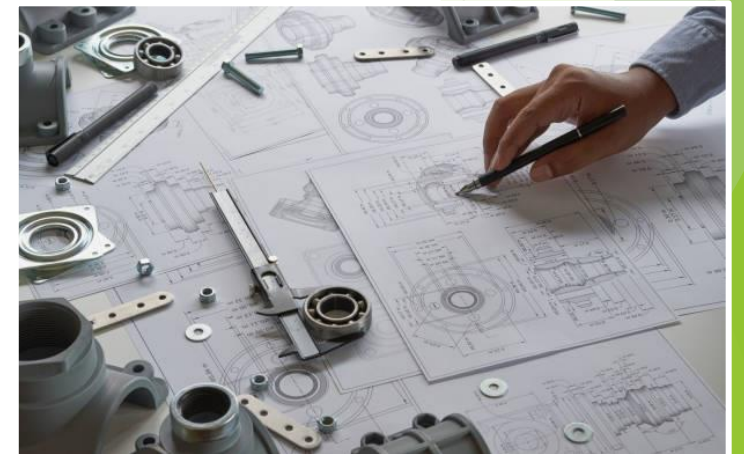
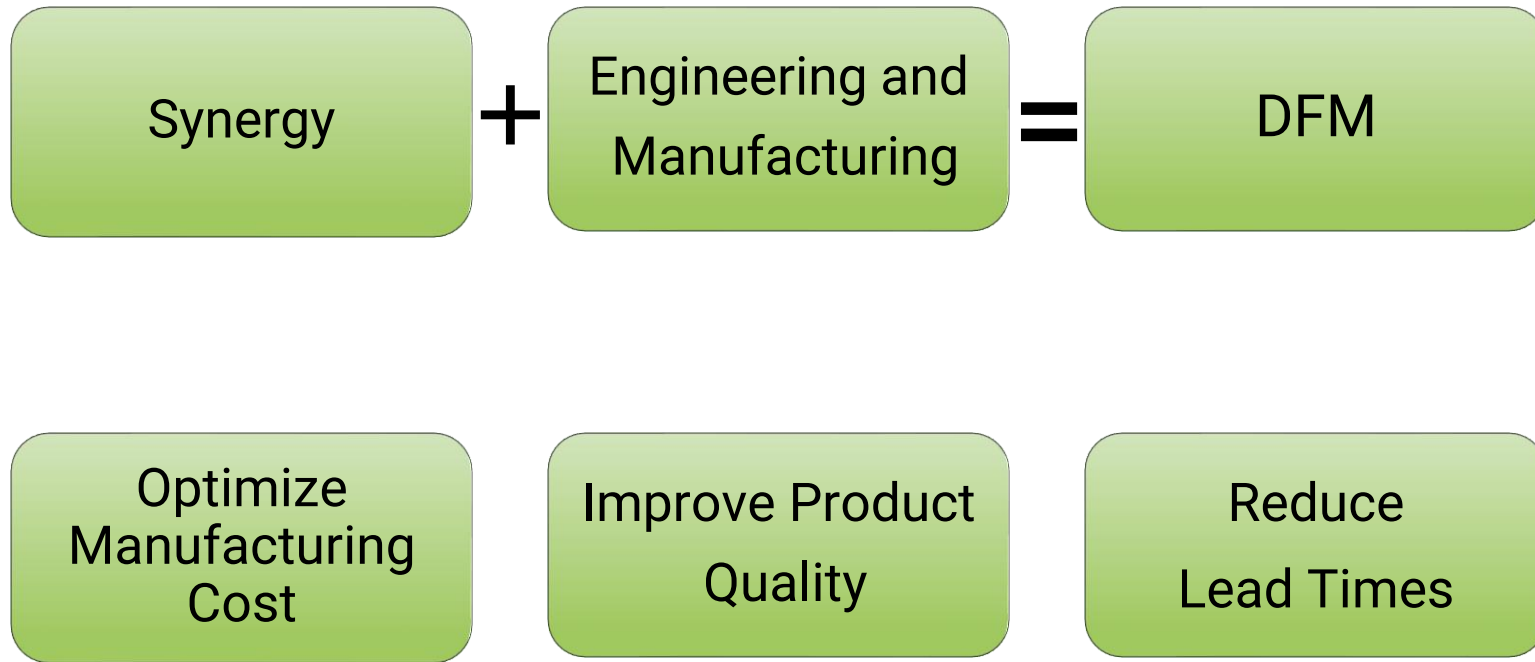
MANUFACTURING



\$SMART Manufacturing

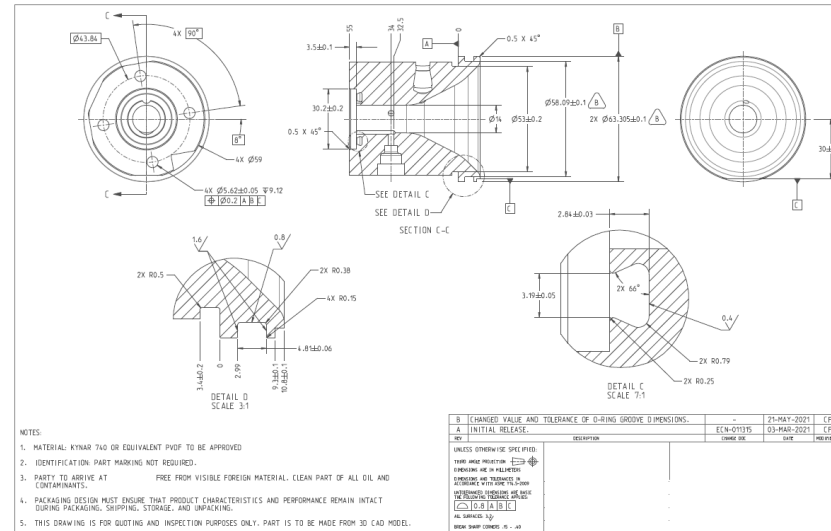
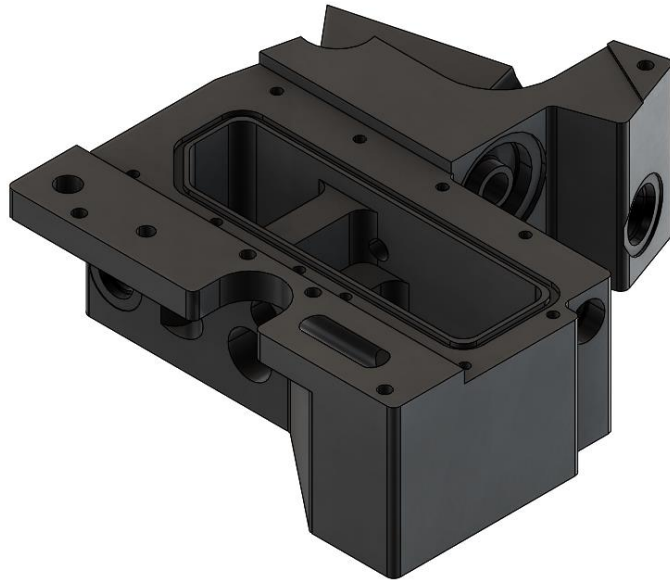
- ▶ Design for Manufacturing (DFM)
- ▶ Zero Inventory Program
- ▶ Low-Cost Global Manufacturing Program
- ▶ Benefits: Price, Quality & Delivery

Design For Manufacturing (DFM)



****DFM = Improved, Quick & Cost-Efficient Products for Customers.**

Design For Manufacturing (DFM)

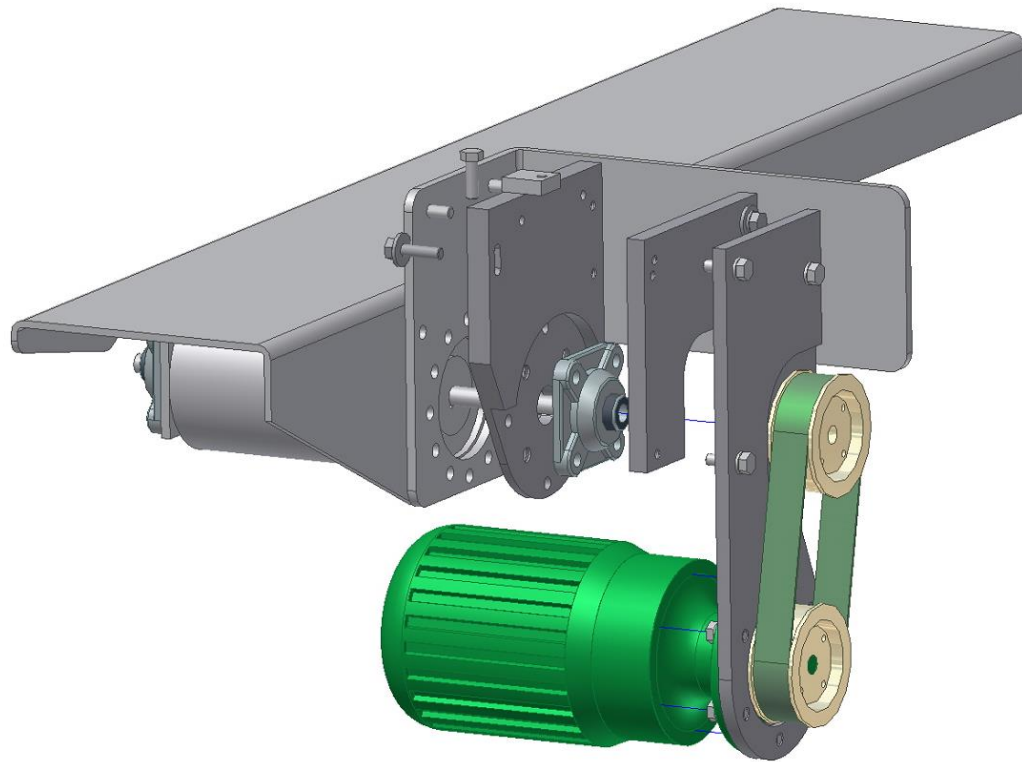


- ▶ Part price reduced 15-30% through DFM Feedback.

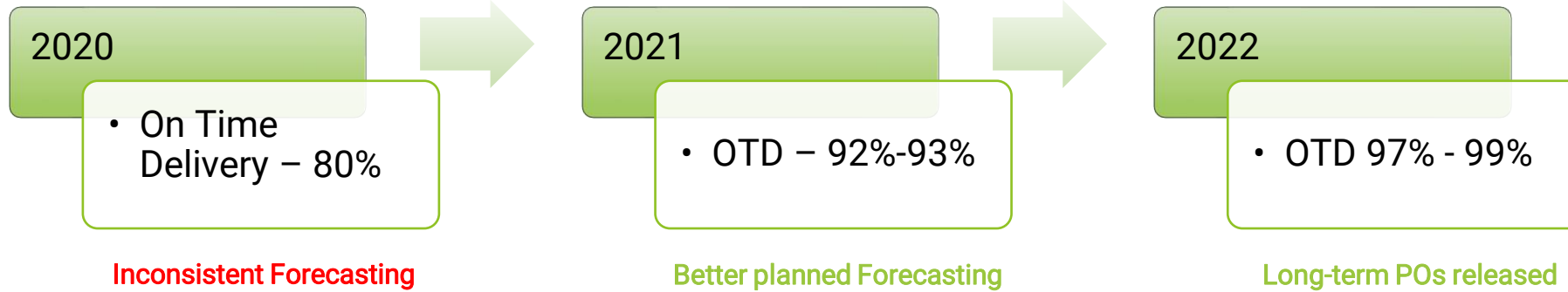
(DFM) Engineering Services

Manufacturing engineering expertise to lower cost of products.

****5 Million dollars saved to our customers****



Zero-Inventory Program



Zero-Inventory Program

****Never run out of parts****

Day Tag #	Drawing Spec	Inspect Equip	Non Dim	@ Tol	IPC?	7	8	9	10
41	3.359	Caliper			✓	3.3585	3.3609	3.360	
48	Ø 380	Pin			✓	3795	3795	379	
52	5.547 5x	Pin + Height Gage			✓	5.5469-5.5472	5.5474-5.5467	5.5472-5.5461	
71	224	Height Gage			✓	2234-224	2238-2232	2235-2256	
74	4.481	GO/NO GO + Height Gage			✓	4.4810	4.4782	4.4822	
97	Ø 120 3x	Pin		+0.04-0.01	✓	119-120	119-1195	119-120	
99	Ø 175 3x	Caliper C			✓	1756-1776	1760-177	1747-1746	
101.2	Thread 2.0x 0.75 4x	GO / NO-GO			✓				@Gp @No-GO
105	Ø 217 4x	Pin		+0.02-0.0	✓	2175-218	2175-218	2175-218	
107	Ø 328 4x	Pin			✓	3281-3307	3280-331	3311-3323	
128	Thread 4x0.625 Ex	GO / NO-GO			✓				@Gp @No-GO
131	1.222	GO/NO GO + Height Gage			✓	1.2215	1.2205	1.2238	
186	488 8x	GO/NO GO + Height Gage			✓	4876-4792	488-471	4873-4887	



- ▶ Faster Delivery
- ▶ Cost Savings
- ▶ Consistent Availability
- ▶ Order Accuracy
- ▶ Just-in-Time Supply



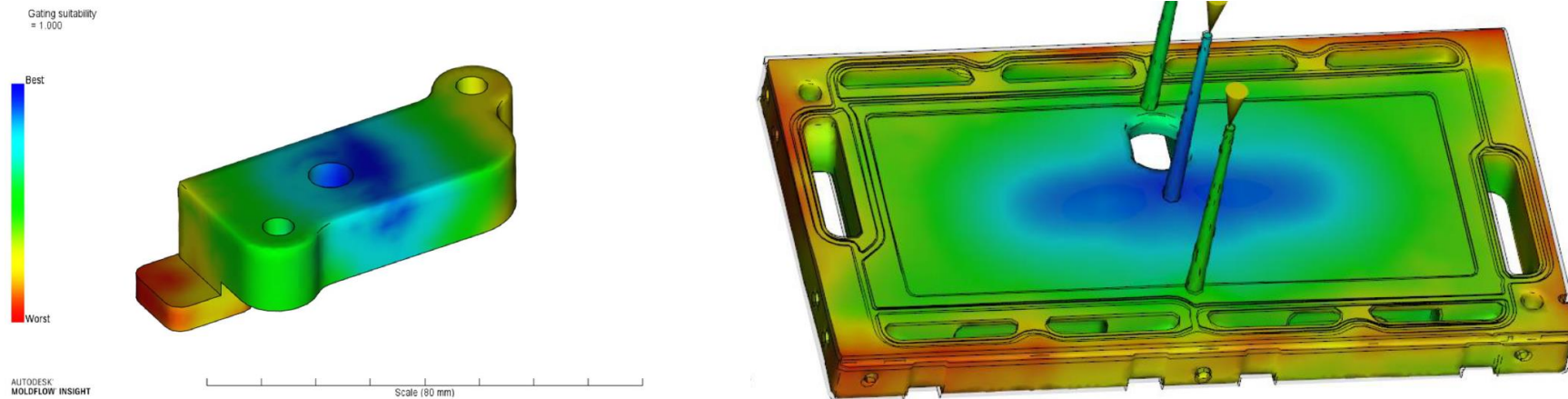
Global Manufacturing Resources

The background features abstract, overlapping geometric shapes in various shades of green, ranging from light lime to dark forest green. These shapes are primarily located on the right side of the page, creating a modern, dynamic feel. The text is centered on the left side of the page.



- ▶ Global Manufacturing Resources
- ▶ Optimize Production Cost
- ▶ CIMtech Green Energy Quality Systems
- ▶ Facilities managed by CIMtech Management Systems

Global Injection Molding Capabilities



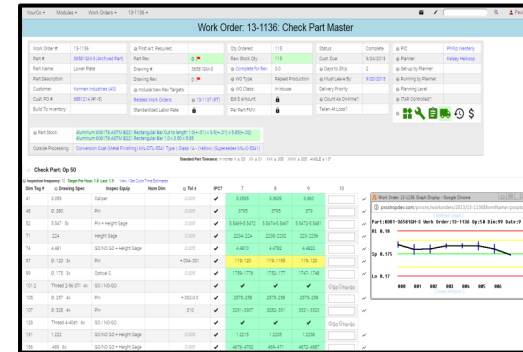
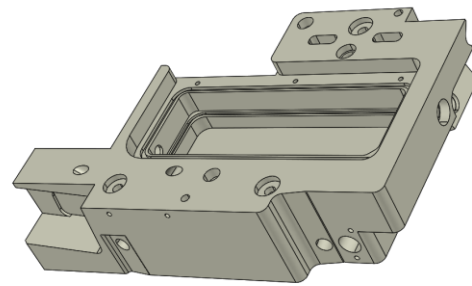
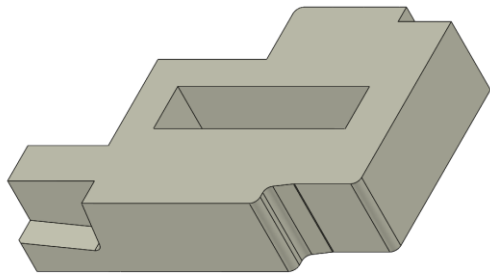
- ▶ Injection Mold Design done at CIMtech Green Energy
- ▶ Software Capabilities for Analysis & Tooling

Lower Cost of Manufacturing

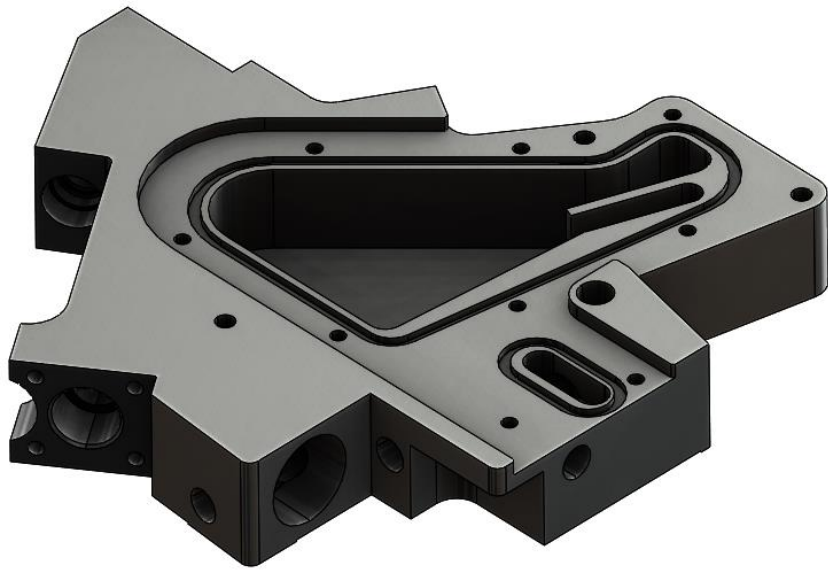
Roughed out material blanks from Suppliers

Final Machining & Assembly
CIMtech Green Energy

Managed by Global ERP Systems
Quality Assurance



\$SMART Manufacturing



- ▶ Part Cost: \$300 USD
- ▶ Annual Qty: 5000
- ▶ DFM – Cost reduction: 15%
- ▶ Annual savings: **\$225,000**

CIMtech Global Mfg. & Expansion

- ▶ Multiple Mfg. Facilities - CIMtech management systems
- ▶ CIMtech Green Energy expansion - US Warehouse Facility
- ▶ Semi-finished materials – Lower Cost of Manufacturing

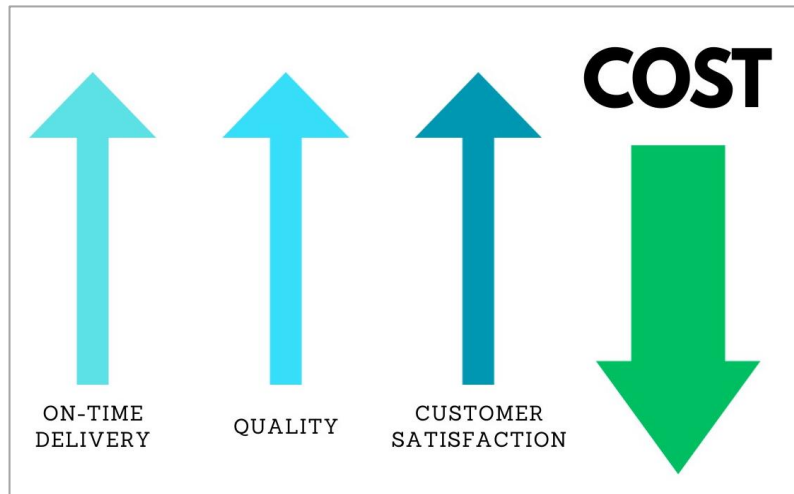


\$SMART Manufacturing

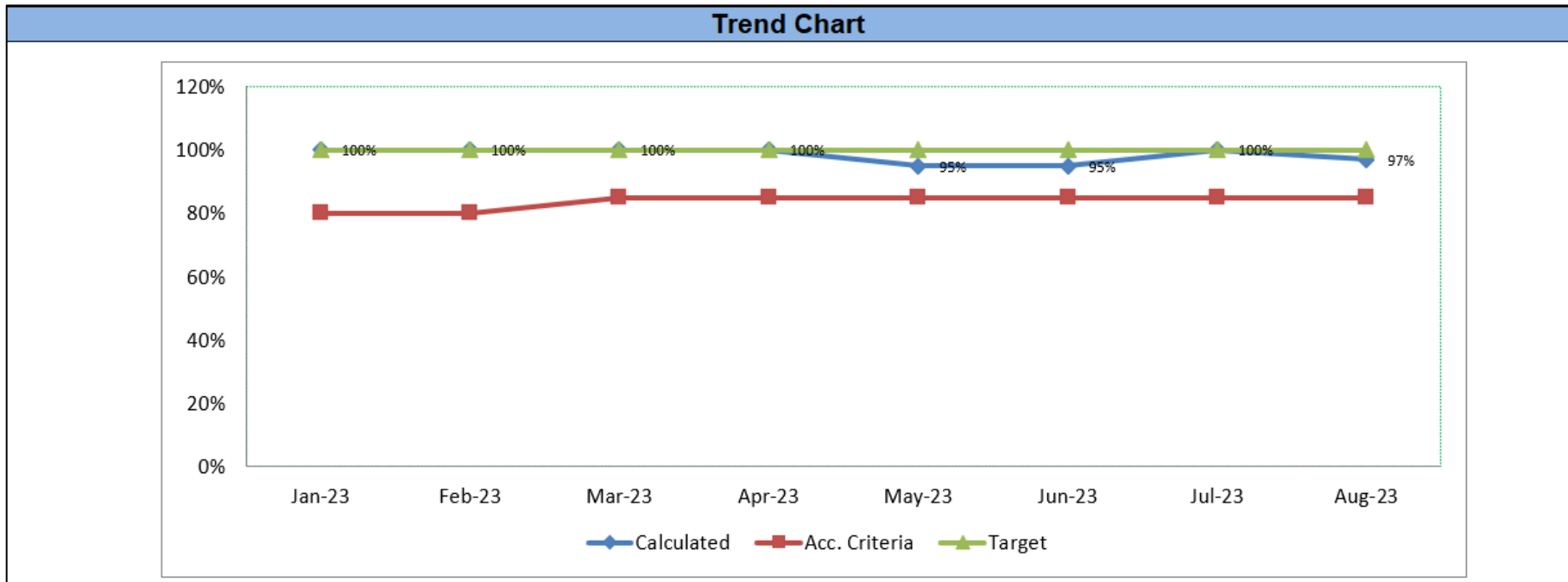
Cost Reduction
10% to 30%

99.8% Quality
Achieved

Zero Inventory
Program ensured
99.7% ON-Time
Delivery



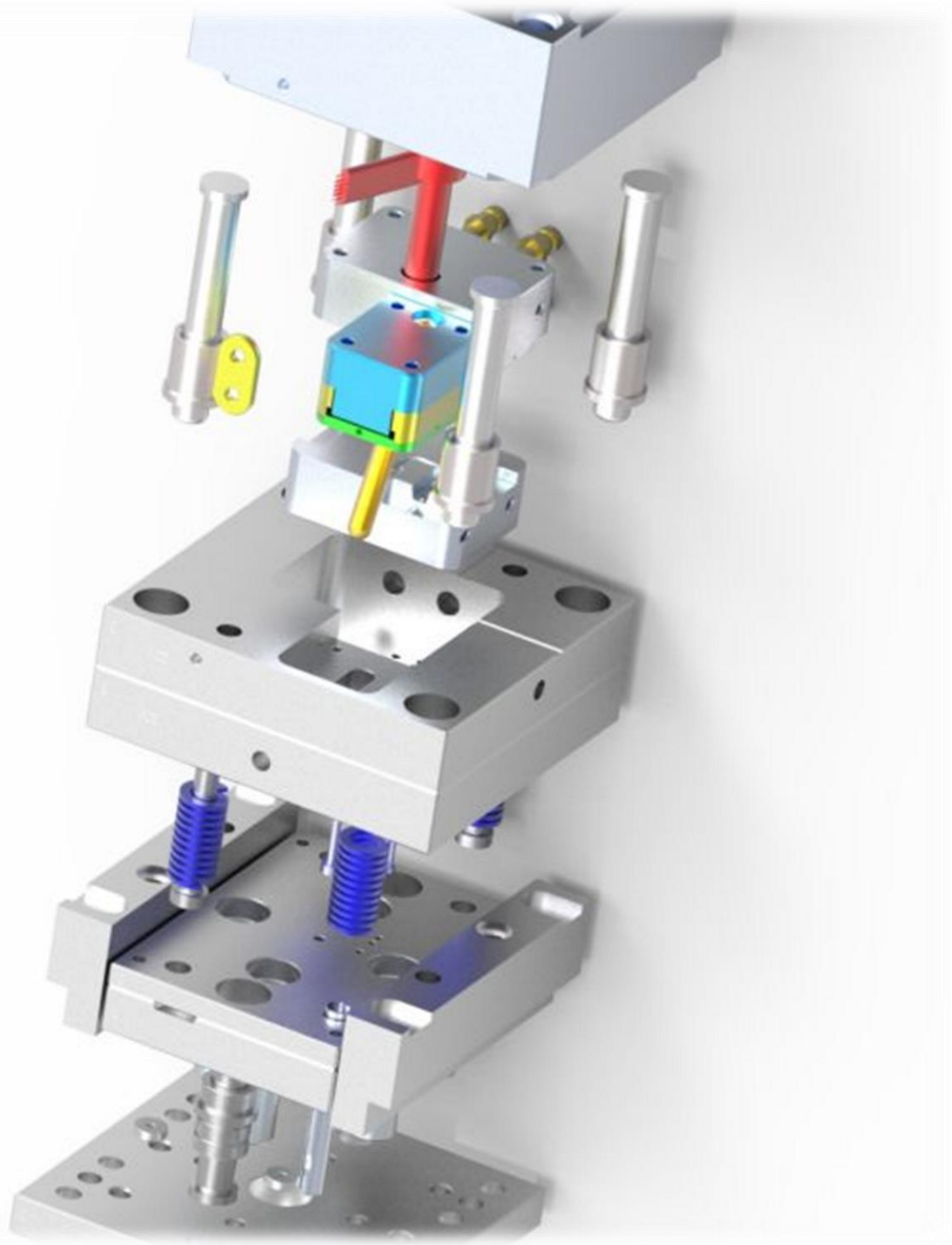
Quality



- ▶ Facilities Management; Cloud Based ERP System & CIMtech Green Energy
- ▶ CIMtech Quality for customers – 99% Achieved

Proof of concept- Prototype Manufacturing

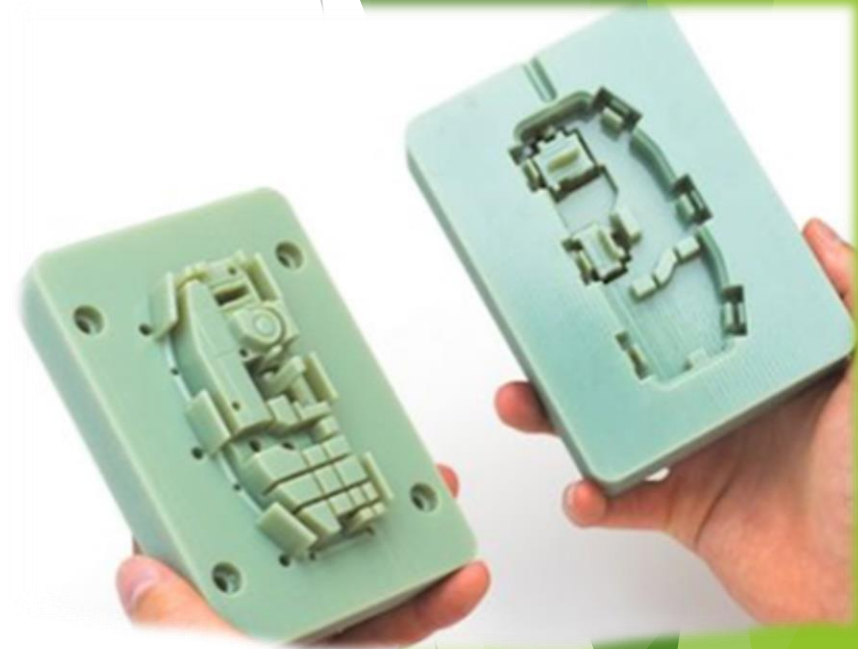
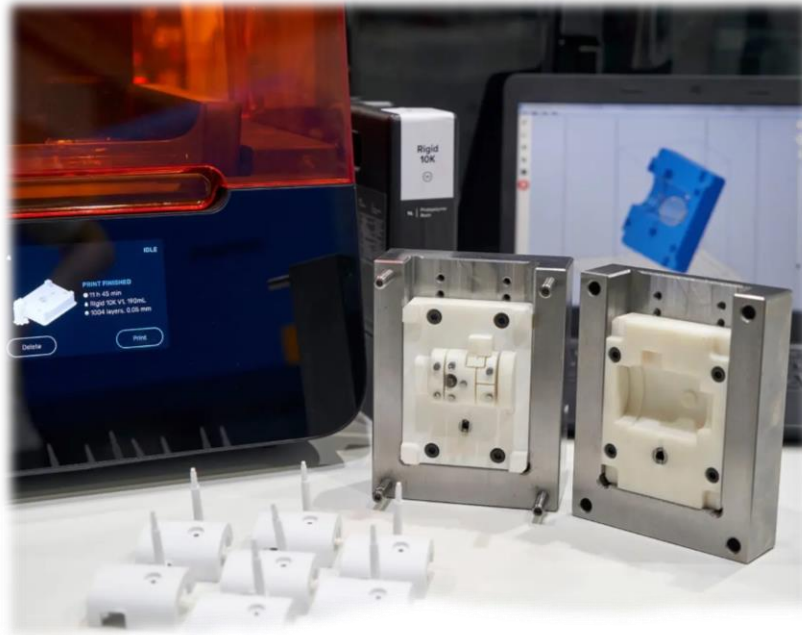
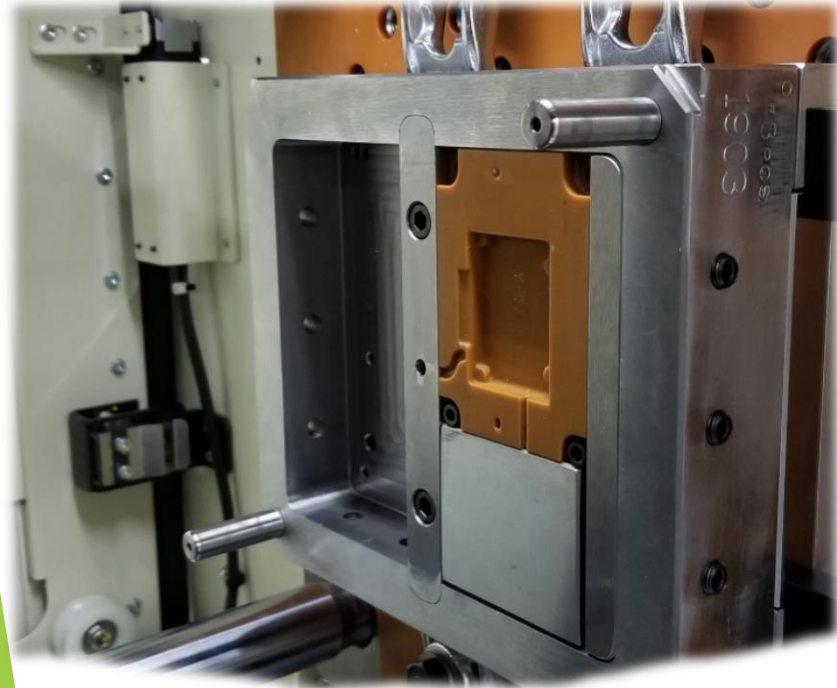




Low Volume Injection Molding

****Suit Your Small Batch Order****

Low Volume Injection Molding



Definition: At CIMtech, our on-demand, low-volume production offering with injection molding which uses aluminum tooling is a fast, cost-effective way to produce hundreds of thousands of end-use molded parts.

This is a specialized service offering full production-quality parts but in volumes usually limited to 1,000 pieces or fewer, depending on the process used. Our low-volume molding, also called short runs, are monitored and controlled so you can be assured of all aspects of mold design and build. This type of production is ideal for small and medium-sized businesses or small-batch manufacturing.

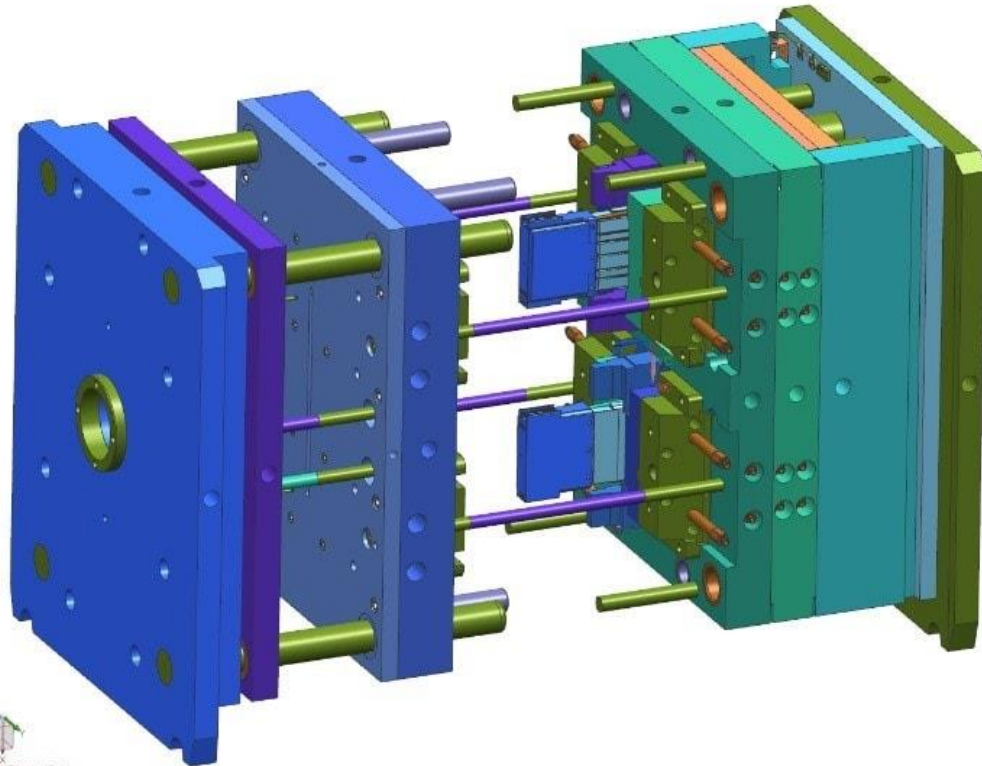
Low Volume Injection Molding

Cost Effective Tooling – Turn Around in 14 days

- Lower Injection Mold Cost by 50% to 80%
- Faster Production Cycles - Turn Around Time in 2 weeks
- Design Flexibility – Shorter Runs – Test New Designs Before Production
- Risk Mitigation before Scaled Manufacturing
- No Minimum Order Quantity Required
- Reduced Waste and Environmental Impact



Injection Molding Design Engineering



Top WORK Camera Top

- ▶ Capabilities to design & manufacture complex molds.

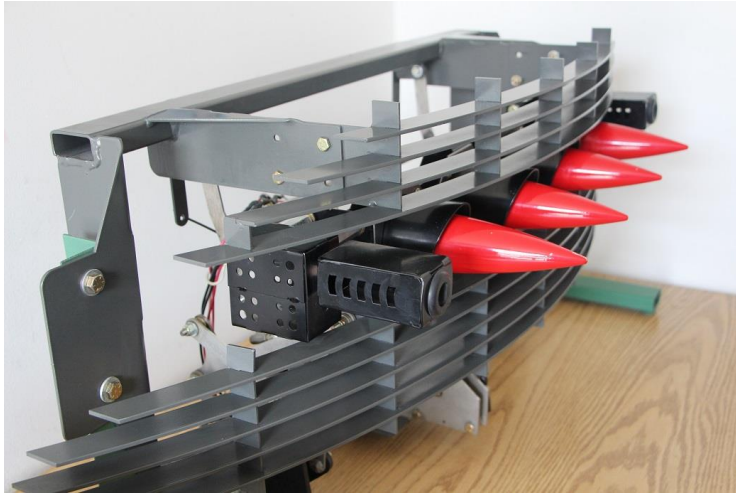
Autoclave Bonding Capabilities



CNC Machining & Autoclave Bonding Capabilities – G10 & Composites

Sheet Metal Fabrication

Sheet Metal Fabrications from prototyping to production.

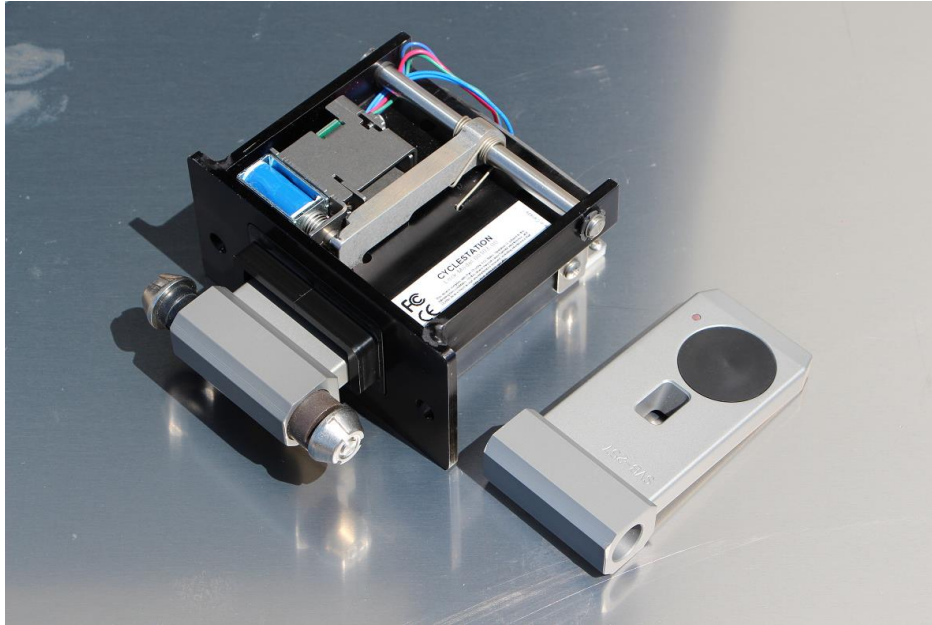


Sheet Metal Fabrication

Sheet Metal Fabrications from prototyping to production.

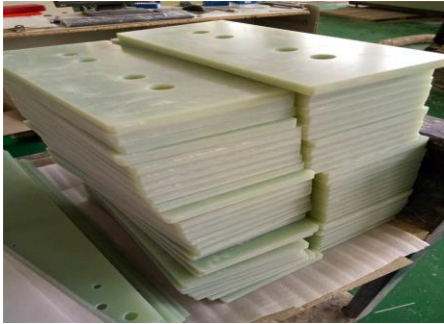


Assembly Capabilities



2000 STATION BIKE SHARE SYSTEM (Installed at Miami Beach, Florida)

Components and Assemblies



▶ G10 - FR4



▶ PVDF Parts



▶ Carbon Graphite Plates



▶ Aluminum Manifolds

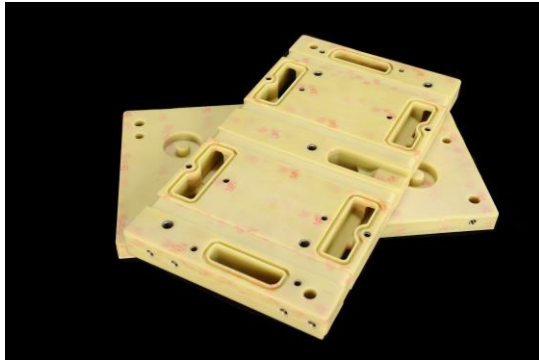


▶ Clear Acrylic

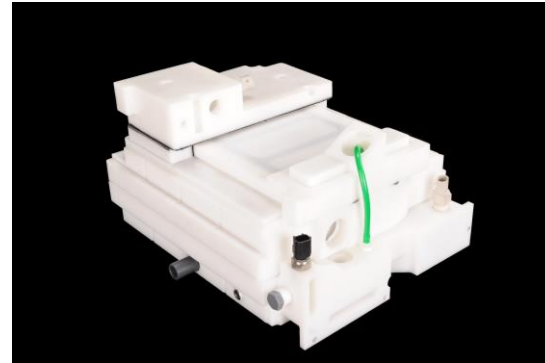


▶ Fuel Cell Assembly

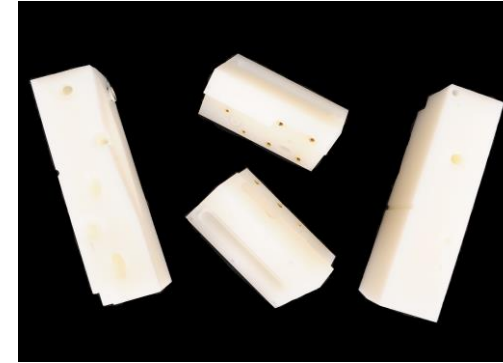
Fuel Cell Parts and Assemblies



▶ G11 - FR4



▶ Fuel Cell Unit



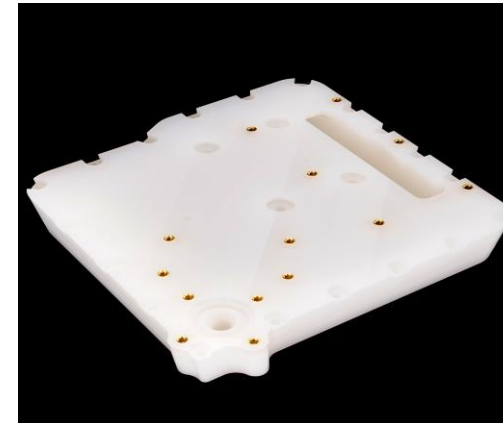
▶ PVDF Parts



▶ Acetron GP Manifolds



▶ Clear Acrylic



▶ PVDF Assembly

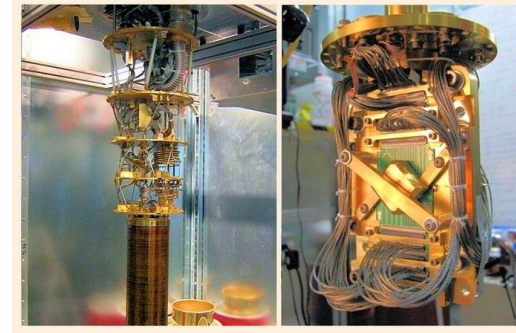
Cool Projects



▶ Hydrogen Powered Forklifts



▶ Gun & Rocket System



▶ Quantum Computers



▶ Hydrogen Truck



▶ Cellcentric Fuel Cell

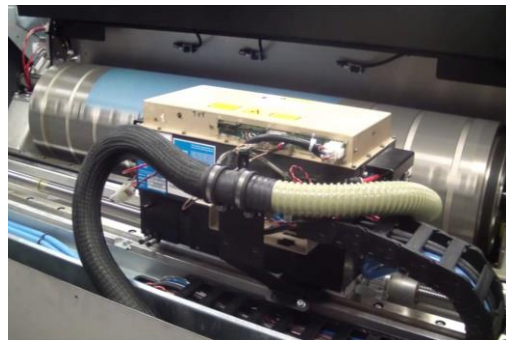


▶ Fuel Cell Automotive

Cool Projects



▶ Google goes Quantum



▶ Kodak Laser Head



▶ Solar Powered Bike Share



▶ Boeing 787 Tooling



▶ Hydrogen Fueling Station

Quality Certifications



Canada's top 10 manufacturing company



Powered By
PROSHOP
Digital Manufacturing Ecosystem



YOUR PARTNER IN MANUFACTURING INNOVATION

PROTOTYPING - PRODUCTION - ASSEMBLY - ENGINEERING

Get your parts in 14 days

CIMtech Green Energy Mfg Inc.
5-17942, 55 Ave, Surrey, BC, Canada V3S 6C8

E-mail: info@cimtech.green

www.CimtechGreenEnergy.com